



Pioche Walking Tour
Page 4



The Overland Hotel
Page 8



Lodging
Page 11



Fogliani Family
Page 12

TREASURE HILL CHRONICLES

PIOCHE THEN AND NOW

Winter, 2011



PIOCHE AREA WINTER SPORTS

By Barbara Rohde

When snow blankets the hills in Pioche, residents don't bemoan their fate and turn up the thermostat: they throw on their long-johns and winter coats, and head outdoors! Snowmobiling used to be popular, until ATV's came along; now many folks just load up their ATV's and head for the dirt roads and explore from sun-up to sun-down. The Silver State ATV Trail can be accessed from Pioche, by following the old road to the "Ely Valley Mine" and the brown Carsonite (skinny fiberglass) markers. Many other dirt roads are popular for those that want to trailer their ATV's to start exploring; for any of these adventures be sure to take along extra gas, warm & dry change of clothing, and a small Coleman type stove in case you run into vehicle problems along the trail.

Those that enjoy self-propelled activities grab their cross-country skis, and sometimes (before the side roads are plowed) just ski right out their front door! The Pioche Golf Course offers some good downhill and side-hill runs for testing one's cross-country skills, with parking right beside State Route 322. One Pioche resident has even found some slopes steep enough to use his downhill skis, but doesn't recommend it for the faint-hearted: to reach the top, you must do some hefty hiking – and then it is a short run, indeed!



Ice-fishing may be done from late December until mid-February, at Eagle Valley Reservoir, Spring Valley State Park. Fishers usually open their own holes with ice-augers, and these often remain open for a few days afterwards if you don't have your own auger. Bundle up for ice fishing: it doesn't resemble the same sport made popular in the movie "Grumpy Old Men" in which people bring or build huts to erect over their fishing holes!

While the ice is usually sturdy enough for pedestrian traffic or even ice skating, vehicles and structures are not allowed (or recommended) on the ice! (The State Highway Department maintains State Route 322 in plowed conditions, to the park fee station; beyond that, conditions on the graveled road can be questionable.) The ice is usually 12 to 15 inches thick; call the park office before your visit, 775-962-5102, or the Regional Visitor Center 775-728-4460, for current conditions.

The regular Nevada fishing license is required for fishing in all waters of the state, no exception for winter ice-fishing! During the winter, the German Brown trout seem to be hungrier than the Rainbow Trout, and near-trophy size trout are sometimes taken from the lake. Echo Canyon Reservoir, at Echo Canyon State Recreation Area, sometimes freezes hard enough for ice fishing; but generally only during the coldest winters.

For any of these activities, be sure to bring along warm and dry change of clothing; days may reach the 40's or 50's, but as soon as the sun goes behind a cloud (or the hills), the temperature plummets rapidly.

In addition, storms can often develop quickly, and a north wind usually brings these storms in – which can be very cold if you haven't prepared. Dressing in layers is usually best: with long-johns underneath street clothing, fleece or down vest with woolly cap may keep you warm enough on sunny days, with a wind-resistant outer layer and woolly mittens or gloves when the wind comes up. Bringing along a Thermos full of hot cocoa or coffee will also warm your insides!



Looking down on Pioche Main Street.

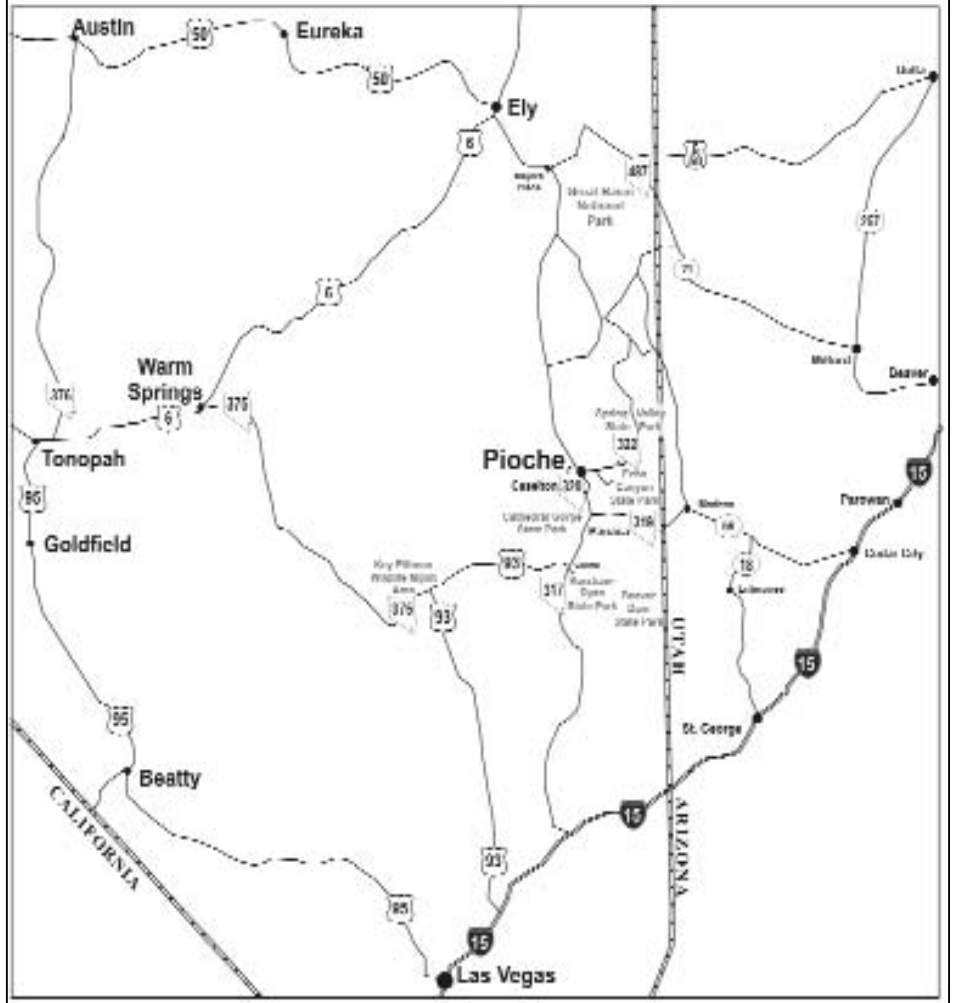
Welcome TO OUR TOWN

Before you set out to explore the town and its surroundings, please take a few minutes to browse through this informative little paper. You will find a tour of the uptown historic district, a brief overview of life in a boom town mining camp miles from mainstream America that is in stark contrast to the present day village. We are surrounded with what is probably our biggest asset, the natural World of the high desert of southeastern Nevada. You will find a description of our state parks, nearly endless public lands, the wildlife viewing, hunting and fishing possibilities. For those that want to stay a while, our businesses are advertising their services and for those that might be tempted to permanently join us for a more laid back lifestyle, we have included a relocation section with a listing of community services, fees, etc. Lastly, we have included a bibliography for further reading and internet browsing.



Looking down Main Street Pioche, through the years.

PIOCHE ON THE MAP



PIOCHE BINGO NIGHTS

By Barbara Rohde

The ever-popular Bingo Nights sponsored by Pioche Chamber of Commerce are held once a month at the Pioche Town Hall. The Bingo games are a way to raise funds for the fireworks at the annual Labor Day celebration as well as provide good clean fun for all ages.

The first round will start at 6:00 p.m., and Bingo will run until 8:00 p.m. Prizes include baked goods, donated items from local businesses, and even a cash hand or two. This year, Bingo will be offered one night a month; we invite visitors and residents from all the towns in Lincoln County to come join us, and help us raise the funds for the fireworks, parade prizes, games and mining events prizes that are given during the Labor Day weekend. Snacks and drinks will also be available for a small charge. We would also welcome any baked goods to be donated for prizes; please contact Alyson Hammond at 962-5455 if you have something to donate.



Group Visits to Pioche —

The Pioche Chamber of Commerce welcomes your group to our town. In addition to the varied outdoor recreation available in Lincoln County, the Chamber is pleased to provide the informational tours and possible discounts for your group.

Town Tour – Guided tour of Pioche

A local resident will meet your group of 10 or more at different locations in town to provide information and answer questions. There is no charge, but donations are always gratefully accepted at both the Lincoln County Museum on Main St and the Courthouse Museum. Note: the Chamber cannot provide transportation.

Discounts – Retail businesses may provide discounts especially for your group.

Treasure Hill Chronicles

Published Quarterly & distributed throughout
Lincoln County



Published by:
Pioche Chamber of Commerce
P. O. Box 127
Pioche, NV 89043
775-962-5544

Pioche Chamber advertisers make this publication possible. Please let them know how much you enjoy "Treasure Hill Chronicles" by patronizing their business.

See more of Pioche at www.piochenevada.org

LINCOLN COUNTY GOLF COURSE

Play a round on our unique local golf course!



By Peggy Decker

First, we would like to give a little information about our course to readers that may not have read previous issues of the 'Treasure Hill Chronicles'.

The course, at this time of the year, is on a play if weather permits basis. We never know when we may get an inch to a foot of snow or just be too darn cold to play, but if the sun is shining and the temperature is above 50, you'll probably find some of us out there playing a round.

The course is located on Pioche Parks & Recreation land off SR322 at mile marker 2 (there is also a sign at the road entrance).

Association membership is \$25 a year, but everyone is welcome and encouraged to play. There is no set fee, but a suggested minimum donation of \$5 per round will be gladly accepted.

We have no paid staff; therefore the course is improved and maintained completely by volunteers. All donation and fund raising go entirely into these efforts.

The course is a 9-hole executive course with seven par 3 and two par 4 holes (par 29) with a total length of 1,656 yards. All green and tee boxes are of artificial turf with five of them surrounded with an artificial turf fringe, the other four have landing zones of grass.



This grass is maintained by gravity flow sprinkling system. We may not have the fanciest or the most beautiful course in the world, but we do have the most unique - just come out and play a round and you will have the time of your life.

The goal for our course is to be a model for what low maintenance golf can be without just playing on dirt.

Constructing and maintaining grass greens and tee-boxes is prohibitively expensive and labor intensive for small, remote communities, so we settled on a nine-hole executive course with the latest technology in artificial turf greens.

We have special rules for the dirt fairways: mats or tees are allowed and winter rules are in force.

The ball can be moved up to two club lengths in the rough (which is really rough), but no aids such as tees or mats can be used, although if a handy weed or tuft of grass happens to fall within those two club lengths, the players are allowed to place the ball upon them.

The course is a work in progress, and we are so proud of our accomplishments to date. This year (2011), our goal was to get power and drinking water to our main site. The water is there and an area is being pre-

pared for a permanent facility. The power poles are in place and hopefully the Utility Company will get the line in this coming spring.

These are major improvements and ones that we have been working for years.

Since there is still a lot of work remaining to be done, if any of you reading this article feel like you can help in any way - a donation of money, material, or a few hours of work, anything will be appreciated very much.

If you would like any information about the course please call 775-962-1107 or 775-962-2616, Peggy or Dick will help you out. Thank you!

**PRINCE
MINE
COMING
BACK TO
LIFE??**



An exploration company has acquired a five-year lease on mineral rights at the Prince Mine in Caselton. Several Pioche residents used to live there.



PIOCHE, NEVADA

WALKING TOUR



1. The Million Dollar Courthouse

The Million Dollar Courthouse was designed by Edward Donahue and was built in 1871. It is constructed of brick and stone and borders on the "Classic Revival" style of architecture with its detailing and proportion. The Courthouse originally cost \$16,400, and the jail an additional \$10,000, for a total of \$26,400. Due to "cost over-runs" at the beginning of the project by politicians, and delayed payments with mounting interest, the price soon ballooned to nearly 1 million dollars (\$800,000) by 1936 when it was finally paid off.

2. The Mountain View Hotel

The Mountain View Hotel was built in 1895 by the Ely Valley Mines to house their guests. It is a combination of styles including "Shingle" style and early 1900's "Classic Box". The building is presently in need of restoration.

3. St. John's Masonic Lodge

St. John's Masonic Lodge has been in continuous operation since 1873, making it one of Nevada's oldest lodges. It is constructed of stone and brick, and is a typical "False Front Pioneer" style.



4. The Miner's Market

The Miner's Market is located north of the Silver Café, on the corner of Main St. and LaCour Street. The store opened in 2008 and is operated by Debbie Sandoval and her son Dee. The town had been without a grocery store since the closing of the last one in 2002. In earlier days, the building was the site of Amsden Garage, Foglianis car dealership, Orr's garage for almost 30 years, and Alfano Brothers' The Workshop (custom woodwork).

5. The Commercial Club/Amsden Buildings

The Commercial Club/Amsden Buildings, built about 1865, are located at the junction of Main and LaCour streets and were once the hub of community activity. Pioche's old Fire House is adjacent to the Amsden building, and it served for nearly 40 years as the fire house and apartment for the fire chief. Attorney A. L. Scott owned the Commercial Club Building for almost 50 years beginning around 1916. He conducted his law practice on the first floor and lived in the basement area.

6. Historic Silver Café

Historic Silver Café, located north of the antique store has been in business for 103 years under several owners. It is one of the oldest continuously operated businesses in the state. Sisters Judy Kwiatowski and Julie White have owned and operated the restaurant for the past several years. They expanded a few years ago with the opening of the adjacent Silver Mine Gift Shop.

7. Purple Onion Antique Store

The antique store was first Welland's Mercantile, then Gottfredson's Dry Goods, followed by Cowley's Drug Store and later, the Baptist Church-Treasure Chest. Corbett's Antiques opened in 1993 but has been closed the past few years. Leo & Dee Schafer opened Purple Onion Antiques & Collectibles in May 2010 on a part time seasonal basis.

8. The Lincoln County Market

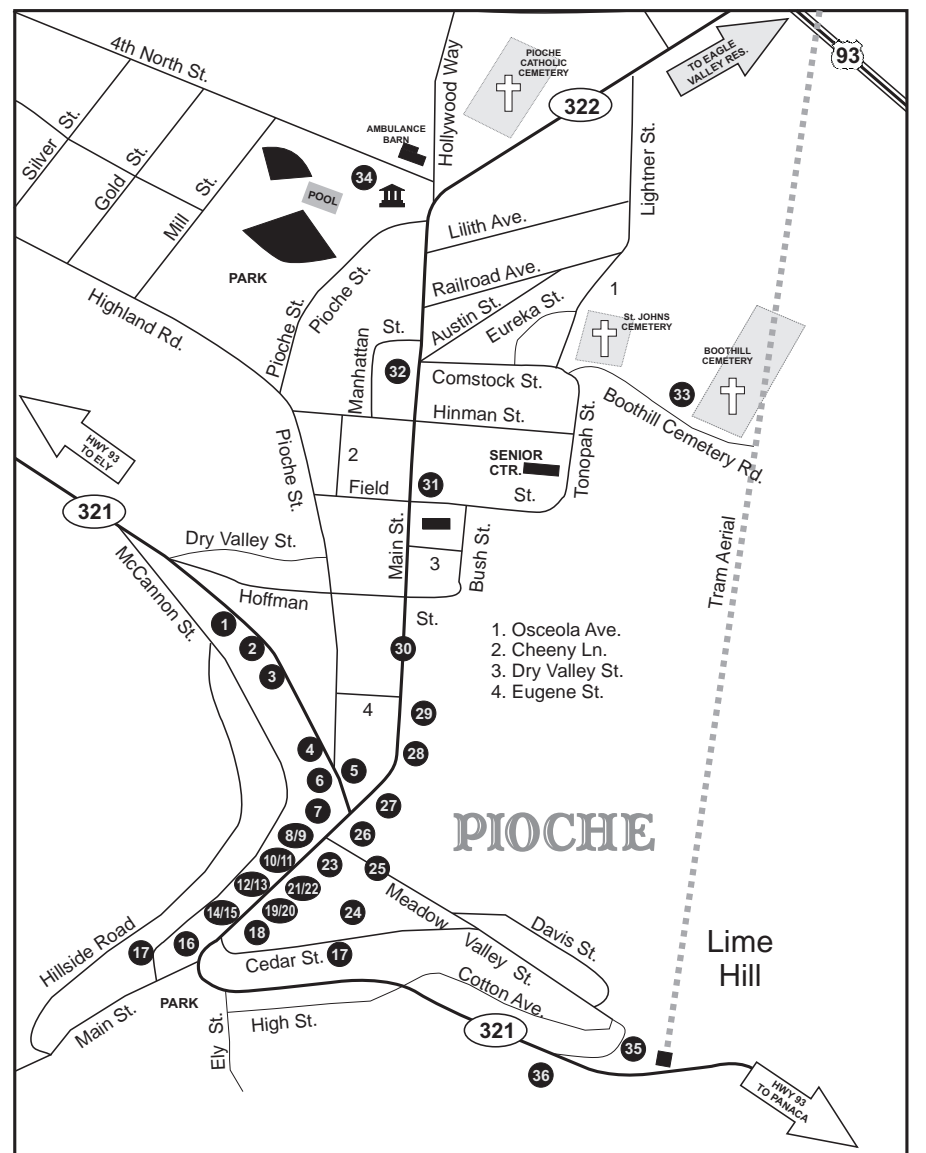
The Lincoln County Market housed the Navajo Bar before being converted into the Stop and Shop grocery market, which was closed in 2002. The building was recently sold and is expected to open in the spring as a resale shop.



9. Dougherty's Fine Jewelry

John Dougherty opened Dougherty's Fine Jewelry in 2009. It previously was a deli and part of the Lincoln County Market.

Walking Tour Map and Legend



- | | |
|--|--|
| 1. The Million Dollar Courthouse | 19-20. Commerce Cottage & Pioche Hotel |
| 2. The Mountain View Hotel | 21-22. Nevada Club & Pioche Odd Fellows Hall |
| 3. St. John's Masonic Lodge | 23. Lincoln County Museum |
| 4. The Miner's Market | 24. Miner's Union Hall |
| 5. Commercial Club/Amsden Building | 25. Meadow Valley Street |
| 6. Silver Café & Silver Mine Gift Shop | 26. Leader Store Building |
| 7. Purple Onion Antiques | 27. Overland Bar & Hotel |
| 8-9. Lincoln County Market & Dougherty's Jewelry | 28. Brown/Thompson Opera House |
| 10-11. Bank Club Building & Pioche Mercantile | 29. Orr Garage |
| 12-13. Pioche News Stand & Stever's Store | 30. Main Street |
| 14-15. Alamo Club & Rainbow Cable | 31. Pioche School |
| 16. Stockum House | 32. Pioche Town Hall |
| 17. McCannon & Cedar Streets | 33. Boot Hill |
| 18. Pioche Record | 34. Lincoln County Court House |
| | 35. Pioche Aerial Tramway |
| | 36. Treasure Hill (Nevada Centennial Marker No. 5) |

PREPARING FOR A SUSTAINABLE NEVADA

FOR MORE INFORMATION

702-258-3930

Toll Free 1-866-300-5600

www.snwa.com

Southern Nevada
Water Authority

A & B SERVICE

Mike Phillips, Owner



24 Hour Wrecker Service

- Gasoline • Oil & Lube Service
- Diesel • Tune-Ups
- Tires • Brakes & Shocks

Serving Pioche since 1944

346 LaCour Street
Pioche, NV 89043

775-962-5822

10. Grubsteak Dinner House (formerly known as part of the Bank Club Building)

In the Bank Club Building, former businesses Lincoln County Market and Treasure Chest have weathered the storms of Main Street, including fires and mining boom and bust cycles. Many businesses have come and gone in these buildings. John Valenti operated the Bank Club bar and café for many years and 1996, it was remodeled into the Grubsteak Dinner House, which closed in 2001. It reopened in spring 2010 as the Grub Pub and Deli and closed in September 2010.

11. The Pioche Mercantile (Buggy Whip)

The Pioche Mercantile was originally known as Hodges & Cook Mercantile. The Christian Brothers, Edwin and Lloyd, operated the store for about 40 years, following the death of their father in about 1925. For years they handled groceries and would order any amount of needed mail order supplies that you would want. The business was acquired from Edwin Christian by Jerome and Tom Sears, descendants of J. L. Sears, a telegrapher that came to Pioche around 1873 from New York. Tom sold the business in 2001. Ted Daskas is the present owner, and it is now a second-hand store.

12. The Pioche News Stand (presently occupied by The Rag Doll)

The Pioche News Stand was originally built in the 1860's, and was partially burned then rebuilt in the early 1870's and in 1919. The false front "Pioneer" style and treatment of the fake brick tin appears to date from the early 1900s. The first telephone system was operated from this building and was owned by J. W. Christian. For many years, part of this building was used as the Pioche Post Office. The Rag Doll gift shop now occupies this area. The News Stand and Phone Company area is now used as storage by the owners, the Christian family.

13. Stever's Store and Beauty Shop (presently owned by SNWA)

Stever's Store and Beauty Shop, originally built in the late 1860's, was partially burned and then rebuilt several times. It served as Stever's Apparel Store and The Garden Bar from 1934 until 1997, when the Stever family sold the business. It has gone through several hands since, and the current owner is the Southern Nevada Water Authority.

14. The Bank Club (formerly known as the Alamo Club)

The Alamo Club was originally built in the mid 1800s and was The Pioche Bank. It is noted for the large bank vault in the rear of the building. Throughout the years this business has hosted many notables and derelicts alike. Ernie Ferri operated the Alamo Club bar and gambling business for about 30 years, and upon his death, his wife Lena continued to run the business. The Ferris owned the oldest continuous gaming and liquor license in the state of Nevada for many years until the 1988 sale. The current owner, Jim Marsh, purchased the building and business from Shirley Scott and renamed the bar to "The Bank Club" in 2003.



15. Pioche's First U.S. Post Office and Western Union Office (presently Rainbow Cable)

Pioche's first U.S. Post Office and Western Union Office building was constructed in 1864 of stone to resist fire. The post office was established on August 17, 1870. Western Union service commenced in 1873. The front was later remodeled and modernized several times, but in 1985 the owners, the John Christian family, had the front rebuilt to its original design. Over the years, it has served as a café and has housed many other businesses. It is presently used by Rainbow Cable and Cell Phone Sales, a division of the Lincoln County Telephone System network of services.

16. The Stockum House

The Stockum House is one of the rare survivors of age and fire in this part of Main Street. It was built in 1866 and has been used as a residence, boarding house, hotel, church and once housed the Francois L. A. Pioche Art Gallery. It is presently a photography portrait studio.

17. McCannon/Cedar Streets

McCannon/Cedar Streets are where the first prominent families built prestigious homes, some of which are still in use today. Several of the homes were built by mining bosses, while others were occupied by doctors and lawyers. These streets were considered to be the fashionable place to live in early day Pioche.



18. The Pioche Record (presently Peggy's Store)

The Pioche Record is the second oldest continuously printed weekly newspaper in the state, which was started in May 1870. Through the years it has changed owners and editors many times. The newspaper office was located for many years in the current Peggy's Store at 768 Main Street, a building that appears to date from the early 1900s. The Pioche Record is

now known as the Lincoln County Record and is headquartered at 197-A Clover Street in Caliente. Two of its most notable editors have been E. L. Nores, who bought the paper about 1920 and ran it for many years; and Thos L. Clay, a retired attorney, who bought it about 1970 and ran it until his death in 1979. More recently, Connie Simkins was the editor for 28 years, from 1979 to 2007. Stephens Media acquired The Record from owner/publisher Raymond Thompson in the fall of 2010.

19. The Commerce Cottage

The Commerce Cottage was one of several lending libraries in Pioche that was operated by commercial establishments in the late 1800s. In 1940, the Lincoln County Library system was started with the purchase of this building which had been a jewelry store. It served as a library for 10 years. After a number of years of neglect, this building was refurbished in 1984 to become the Pioche Chamber of Commerce "Commerce Cottage" and Information Center. The Chamber moved to the first floor of the Thompson's Opera House in 2011 and will utilize the Cottage for inventory storage.

20. The Pioche Hotel

The Pioche Hotel dates from the turn of the century. The hotel was operated by Virginia Cottino and family until the mid-1950s. It is now a private residence.

21. The Nevada Club

The Nevada Club generally dates back to the early 1900s. It is on the site of the original Pioche assay office that had been destroyed by a fire. The present structure is constructed of brick, concrete and stone to reduce the fire hazard potential. The present owner is Larry Gearhart who purchased the bar in 2010.

22. The Pioche Odd Fellows Lodge

The Pioche Odd Fellows Lodge was built in 1872 and was originally J. J. Halpin's Hardware Store before he moved his business to Silver Reef, Utah. It has been used for many lodge functions, community dances, parties and social gatherings. The building most recently was purchased in 2010 by Richard Bohlke.

23. The Lincoln County Museum

The Lincoln County Museum is housed in the building built by A. S. Thompson around 1900. A victim of fire, it was rebuilt once, then later remodeled in 1929 to make it more modern. Upon the death of Charles Thompson, Sr., the building was sold to James Gottfredson, Sr. and he operated a mercantile and clothing store for a time. Later, the store was closed and the Gottfredson family donated the building to Lincoln County in 1962, to become a museum. Over the years, it has evolved into one of the best museums of its kind in the state of Nevada.

24. The Miner's Union Hall

The Miner's Union Hall is presently the Episcopal Church. It is a 3-story wood framed structure with a gable roof. This building was built to fit into landscape and is a typical example of "Plain Early" 20th Century style. The Miner's Union was a center of social activities in this community for nearly 50 years.

25. Meadow Valley Street

Meadow Valley Street was the original entry street from Meadow Valley to the south of Pioche's business district.

Walking Tour, continued on Page 6

McCROSKY'S "Y" SERVICE

SHELL MINI MARKET - VIDEO SLOTS

TIRES BATTERIES LUBE SERVICE

BODY & FENDER WORK



Serving Lincoln County for the Past 49 years!



3 US HWY 93
Panaca, NV 89042

775-728-4461

MINER'S MARKET, LLC

The Pioche Grocery Store

Locally Owned - Where Locals Shop

Monday-Saturday
9 AM - 6 PM

Sunday
10 AM - 2 PM



663 Main Street

Pioche, Nevada
89043

775.962.5777

Fresh Meat . Produce . Dairy . Sundries

Tobacco and Cold Beer

Walking Tour, Continued from page 5

Many of the miners' cabins were located on the southeast end, and businesses flourished on the northwest end. It was one of the main business streets with the Catholic Church, Hanley's Opera House, two livery stables, blacksmith's shop, bakery and dentist office being some of the first businesses located here. A few of these buildings were moved to Delamar in 1894 when that town started booming.

26. The Leader Store Building

The Leader Store building is the impressive building on the northeast corner of Meadow Valley and Main Street. It was owned for many years by the Ben Cohen family and operated as a dry goods store. It now houses a used merchandise business. Next door is a massive stone building once used as a bar, the Allen's Cash Store, and a warehouse for the Leader Store business.



27. The Overland Bar and Hotel Building

The Overland Bar and Hotel building was constructed in 1940 by Bob Free. It has been burned and rebuilt several times over its colorful past. It originally had a bowling alley in the basement, and the west half was rented to the Allen's Cash Store for more than 30 years. This part is now a dance hall, with an antiques shop up front. Candice and Ron Mortenson have owned the Overland since 1995.

28. The Brown/Thompson Opera House

The Brown/Thompson Opera House has survived from its 1873 construction date and was recently extensively renovated. It is entirely constructed of wood and has a classic revival style combined with an early pioneer board construction. It was built by Aleck Brown in March of 1873 and renamed the Thompson's Opera House in April 1892. It was later used as a movie theatre. The Opera House is currently owned by Lincoln County and will be used for public meetings and can be rented for private use. After the new movie house was built, the Gem Theater, the Opera House was used for weekly dances for many years. The Gem Theater showed movies until 2003, when high winds blew the roof off. The roof was repaired, but the owners decided not to reopen because it was more of a community service than a viable business. The Pioche Chamber moved to the Opera House in 2011 to help staff the facility with tours and rental information, as well as continuing to provide tourist area information and souvenirs for sale.

29. The Orr Garage

The Orr Garage was built in the early 1870's and was constructed of stone. Its original use may have been as a blacksmith shop or harness shop. In later years, from about 1915, it was used as an auto repair garage.

30. Main Street

Main Street runs from the famous Treasure Hill to the current Lincoln County Courthouse. From the days of mud and ruts to its present day concrete walks and asphalt paving, there have been thousands of exciting, tragic, happy, and wonderful events that have occurred along this Main Street. People from all over the world have traversed this small area and were charmed by its charisma. Some have stayed. Many have returned again and again. With its gun fights and killings, Pioche became known as the roughest, toughest mining camp in the West. Most of this happened on Main Street.

31. Pioche School

Pioche School was built in 1909 in a "Mission" style of architecture. This was the oldest continuously used school building in the state of Nevada in 1999 when it was abandoned for a new building, built on the northwest side of town by the Pioche Division of Forestry Honor Camp. The original school building was sold and is now privately owned.

32. The Pioche Town Hall

The Pioche Town Hall was built in 1936-37 by the Mormons with donated labor, material and money as the first LDS meeting house in Pioche. It was dedicated in 1950 when it was completely finished and paid for. In 1986 when the new LDS chapel was built, the old building was sold to the Town of Pioche for a public meeting place. Now known as the Pioche Town Hall, it serves many organizations for weekly or monthly meetings, plays, and social events. A noteworthy activity held here is the Labor Day Craft Fair.

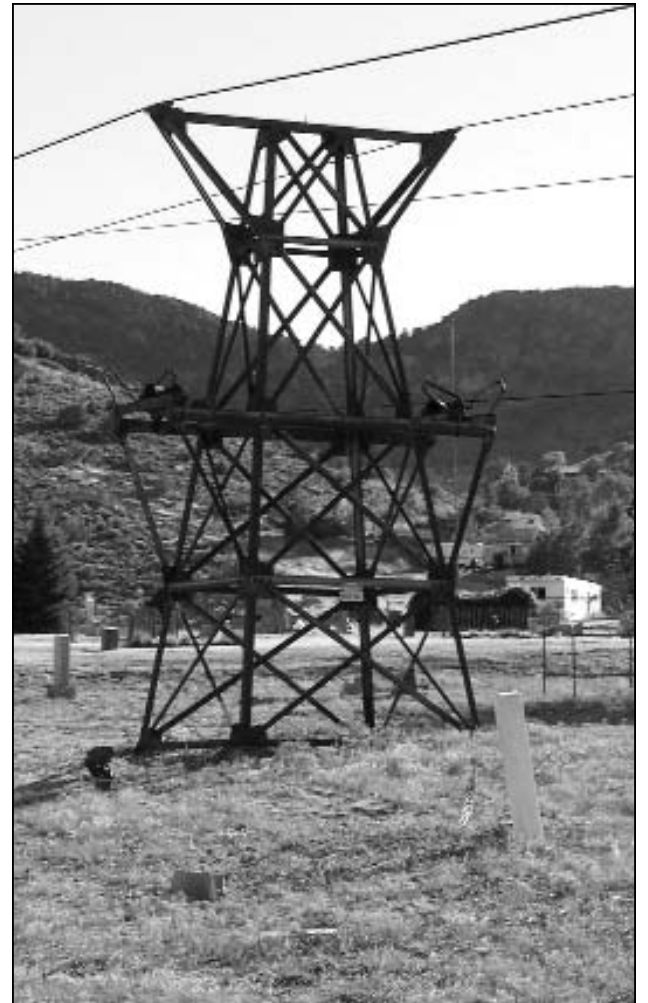
33. Boot Hill

Crime was rampant in Pioche in the early 1870's. During the first settling of Pioche, it was said that 72 men "were killed with their boots on" before anyone died a natural death. Many of these men are buried in the "Old Boot Hill" Cemetery. A monument commemorating Boot Hill was built and donated by E. Clampus Vitus in 2009.



34. The Lincoln County Court House

The Lincoln County Court House was constructed in 1938 to replace the historic courthouse on the hill. It is a simplified version of the Modern Art-Deco style, and it continues to house most all of Lincoln County's government functions. The Sheriff's Office and Jail have been moved north of town off S. R. 322. Excellent park facilities are located adjoining the courthouse with a swimming pool, ball fields, horseshoe pits, playground and picnic areas.



35. Pioche Aerial Tramway

The aerial tramway operated in the 1920s and 1930s carrying ore from the mines on Treasure Hill to Godby's Mill in the valley. Built by the Pioche Mines Company, the tramway was mainly gravity powered with the aid of a 5 horsepower motor. The ore in the full buckets rolled toward the mill and provided the momentum to return the empty buckets to the bin. In 1928, the cost of delivering ore to the mill via this tramway was six cents per ton.



36. Treasure Hill (Nevada Centennial Marker No. 5)

Silver ore was discovered in this range of mountains in 1864, but no important developments took place until 1869 when mines were opened and the Town of Pioche appeared. Pioche soon became the scene of a wild rush of prospectors and fortune seekers and gained a reputation in the 1870s for tough gunmen and bitter lawsuits. Over 5 million dollars in ore was taken out by 1872, and by 1900 Pioche was nearly a ghost town. Designated the seat of Lincoln County in 1871, Pioche survived hard times as a supply and government center for a vast area. In later years, notably during World War II, Pioche was a major producer to the war effort and many men were transferred here to mine the lead and zinc deposits.



HOOIHAN'S EXCAVATING, INC.

UNDERGROUND SPECIALIST
652 MIDDLEGATE ROAD HENDERSON, NEVADA 89015
(702) 564-1480
FAX 564-7024

DYLAN V. FREHNER, Esq. Attorney at Law



135 Lilith Street
P. O. Box 517
Pioche, NV 89043

frehneroutlaw@yahoo.com

775-962-5533 Office
775-549-9586 Fax

GHOST TOWN GAZETTE

Travel • Resorts • Old West • Ghost Towns • History • Legends

Ghost Town Gazette

Fall, 1996 — 7

STAGE COACHING IN PIOCHE

Story by Cowboy George, Editor

Pioche had, in its heyday, four different stage lines.

One was operated by Gilmour & Sullivan from Salt Lake to Beaver, from Beaver to Pioche, with stops at Greenville, Adamville, Minerville, Sulphur Springs, Mt. Springs, Desert Springs, Clover Valley, Bullionville, Bennett Springs, then Pioche.

Another route was from Hamilton to Ocoola down the west side of Mt. Wilson to Pioche. This trip took two days one way. The trip was made two times a week. This route had stage stops at different ranches along the way to change horses and eat. Always a four-up team was used. The average distance a team could pull would be about 15 miles, except in rough hilly country. Sometimes the team would do only about two miles an hour, due to rough country.

The third route was from Hamilton to Pioche. It was operated by Gilmour and Salisbury.

This route was changed several times due to the fact that new silver camps were springing up all the time. Some of the camps hit by the Hamilton to Pioche stage were Sunny-side Mineral City, Cave Valley, Patterson, Bristol, Jack Rabbit, Royal City. In the late 1860s when the stages started to run Pioche, it is interesting to note that Wells Fargo was already out of the stage-coach business. Freighting was the main business of

Wells Fargo. All stage lines hauled freight for Wells Fargo, and some of the stage companies still carried the name of Wells Fargo on their stage.

The fourth line was from Bullionville and Panaca to Pioche and back—two times a day.

After 1865 the Salt Lake to San Francisco Railroad was built linking the country by rail. It wouldn't be until 1905 that rail would be introduced to Southern Nevada.

The mud wagon was the best coach for travel between camps. It was 1,000 lbs. lighter than the Concord. The mud wagon weighed about 2,000 lbs. compared to about 3,000 for the Concord. From the railhead at Palisades, Nevada (close to Elko), it would take two and a half days to traverse the distance between the railhead and Pioche. A strong 6-up team was always used on this run.

The Concord was built in Concord, New Hampshire by Abbott & Downing. The Concord was designed after the egg for strength. Some stages were still running in 1920 with a life-span of 70 years. The body of the coach was built of the best cured oak attainable. It rested on leather straps made from three bull hides. This was called the thorough brace suspension system. This gave the coach a rocking motion like that of a ship—cushioning the coach when it hit ruts

and ditches. The wheel was made from three different types of wood; oak for the felines, hickory for the spokes, and ash for the hubs.

The modern day tire got its name from the wagon wheel. The metal rim that surrounds the wood wheel was called the tire because it tied the wheel together.

The best horses and the worst horses were used. On the Eastern line and around cities, beautiful matched teams were used and as the coaches got further west, the worse the horses got. It wasn't unusual to put unbroken blindfolded horses into

harnesses.

The driver gave the signal and the blindfolds were removed. And then the driver let fly a couple of choice words with the crack of his whip and the horses didn't stop running till the next stop.

The stagecoach trip was anything but fun—it was living hell! Mark Twain describes a journey in Nevada:

"We wallowed through forty miles of bottomless sand, into which the coach sank a foot. We worked our passage most of the way, which is to say that we got out and walked. Powdery white alkali dust floated

above the plain like smoke. Everything, passengers, sagebrush and scenery were all one monotonous gray color."

Another traveler described his trip in a mud wagon:

"Three in a row, we would solemnly rise from our seats and bump our heads against the roof. Most of us got some sleep, somehow, but upon awakening we would find ourselves lying across each other. One poor fellow went mad from lack of sleep!"

Episcopal Bishop Daniel Tuttle tells us of a trip he took that lasted for three days and three nights:

"During the last 50 miles I was completely used up physically. I was past the point of gritting my teeth and enduring. All of my resistance was beaten down. I was ready to cry and would not have offered the least resistance had the driver dumped me down on the roadside and left me behind, under a sage bush. That trip made me understand the stories I had heard of passengers who could not sleep and who had become demented."

To add to the excitement of riding in a stagecoach, we have runaway horses, wind storms, snow storms, cold weather, bugs, dust, vomit, Indians, overcrowded coaches, and

last but not least, the stagecoach robber.

The story goes that the incoming stage was robbed just outside Pioche. Two hours later, when the stage left Pioche, it was robbed again—by the same robber. So often have the stages been robbed in and around Pioche, that it was necessary to pour the silver being shipped into 200 lb. bars. The only way the riches left Pioche were by horseback or stage. It wasn't unusual for the stage to be carrying \$200,000 to \$300,000 in silver.

**EVERY OTHER DAY
STAGE LINES.**

PIOCHE

HURD & A.

FARE . . . \$2.00.

DEPARTS FROM
HAMILTON TO SPANISH AND
SCHELL CREEK,
AND RETURN FROM
HAMILTON TO CHERY CREEK

EVERY OTHER DAY FROM
PIOCHE TO SALT LAKE CITY
VIA LEEDS.
FARE TO TERMINUS, 96c.

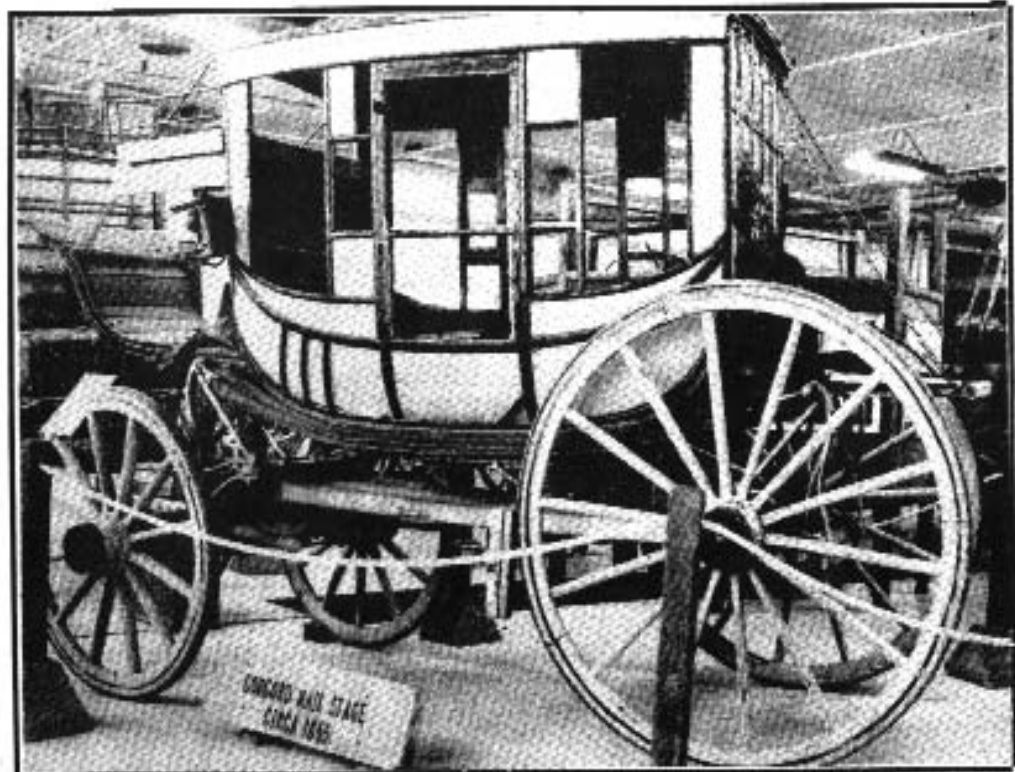
HILMER & SALISBURY, Proprietors.

CARRYING U. S. MAIL AND WELLS FARGO'S EXPRESS.

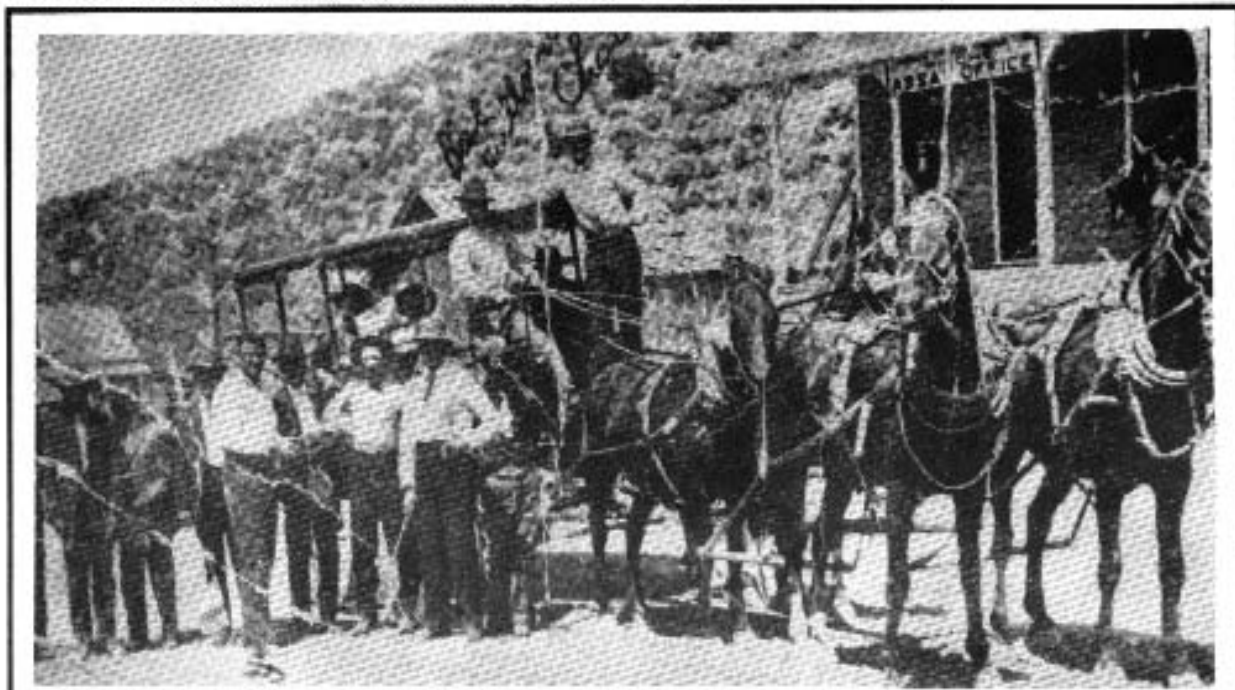
The Three Lines newly Stocked with
FINE AMERICAN HORSES and
NEW CONCORD COACHES.

Antiques

BOUGHT AND SOLD
(702) 962-5542



Typical Concord Stage, used on the Palisades to Pioche route, drawn by a 6-horse team.



The only real bus at the Pioche Depot—“Billy” Culverwell, driver, standing to driver's left is Charlie Lee. Other men in the photo are Herman Freudenthal, Charles Culverwell, Six Shooter Bill, Walker Lee, Denny Sullivan, Richard (or Dick) Gillespie and Al Carman.

THE OVERLAND HOTEL

Hotel was built in 1917, burned in 1947, then restored

By Candice Mortenson

The Overland was built as a boarding house and saloon in 1917. In 1947 the Overland burned to the ground in the fire that killed 3 people and destroyed approx. a third of uptown Pioche. This fire was a grease fire that started in a coffee shop that was located around the corner from the Overland.

It was rebuilt in 1948, using the existing footprint, and was made of poured concrete in the basement and first floor. The second floor was added and was made out of brick. At that time, the rooms were created and the entire second floor at the front of the Overland was built to accommodate doctors' offices. The ground floor of the hotel was divided in half-



The back bar survived the San Francisco earthquake of 1906, and was shipped to Kimberley in approx. 1915. The bar is hand-carved and made of solid cherry wood. The front part of the bar is mahogany, and was made by the "Brunswick" company approx. 125 yrs. ago.

In 1974 Bill Brown purchased The Overland from the Free family. He changed the configuration to where it is today---the grocery store became a coffee shop in the front, with a large dance hall in the middle and a shop area in the back.

In 1996 Ron & Candice Mortenson purchased the hotel and began a restoration project that continues to this day. The rooms have been completely rehabbed and remodeled and are now decorated in "lodge" or "southwest" themes. Over 10,000 sq. ft. of the original oak hardwood floors have been restored and the coffee

Fires in Pioche —



---one-half being where the saloon is now; and the other half was the grocery store in Pioche.

As the Overland was being rebuilt, the copper company located in Ely decided to mine an area where the town of Kimberley was located. They actually tore the town down to the ground in order to create a mining area. When the Overland was rebuilt, they brought the antique back bar and front bar from a bar in Kimberley, as well as the bank teller's cage from the local bank. The teller's cage is the check-in area for the hotel. The back bar was made in 1863 in England and shipped around the Horn to the Barbary Coast area of San Francisco.



shop has been turned into a gift shop. It appears that the Overland will be one of the few original buildings in Pioche that have been completely rehabbed and survive as its original use of a saloon and rooms for rent.

JIM WILKIN TRUCKING LLC

Sand & Gravel Red-Mix Concrete Construction

One Mile South of Intersection
Hwy 93 & 319 on US Hwy 93
Panaca, NV 89042

Serving Lincoln County since 1972

Managers: Jim & Lorin Wilkin

jwtrucking@yahoo.com 775-728-4770

Tillie's
Mini Market &
Wright's Country Cabins
775-962-5205

Bread, Milk, Eggs, Ice,
Sodas, Snacks, Cigarettes,
other grocery items
Hunt/Fish Licenses & Supplies

Open 7 days a week
6 am to 8 pm (Winter Hours)
704 Main Street
Next to Bank of America
Pioche, NV 89043

Piñon Pines of Lincoln County

By Donald Shanks

The elevations between 5,000 and 8,000 feet in Lincoln County include vast tracts of piñon and juniper forest, PJ for short. Some tree connoisseurs from more humid regions derisively call it the pigmy forest, and nearly everyone in the region takes them for granted, a weed tree to be removed or exploited. They were used by the miners to make charcoal and timbers; settlers used them for fence-posts and burned them to bring back grass; and later, huge amounts were chained, but still they claim new territory. There is an ongoing debate as to whether they are an invasive water-wasting weed, choking out everything else or are just reclaiming their former turf.

Years of fire suppression have left few natural firebreaks, so biomass projects are on the drawing boards. But native Americans certainly found many uses for them, including a very nutritious food source, the large, tasty pine nut. There are two varieties of piñon pines in the region comprising the Great Basin and the Colorado Plateau. *Pinus monophylla*, the single leaf piñon, grows in much of the Great Basin, including Nevada in areas above about 6,000 feet, although strangely, is missing in the area north of the Truckee and Humboldt Rivers. *Pinus edulis* is the two-needled pine, with smaller pine nuts, but still highly sought after, that grows further east in the more humid summer climates of the Colorado Plateau, although a few of this variety are found in Lincoln County.

A more recent use that is gaining popularity is the harvesting of piñon pines for Christmas trees. Many families are finding that a trip into the countryside to harvest their own tree makes a great kickoff to the Christmas season. The Caliente Office of the BLM issues 5,000 tags per year that can be used anywhere on BLM land in Lincoln County other than wilderness areas and the higher peaks that contain more valuable and scarcer ponderosa pine, bristlecone pine, white fir and Douglas fir.

Prime areas around Pioche include the Highland, Bristol and Wilson Creek Ranges, Meadow Valley Wash north of Spring Valley State Park, Highway 93, 13 to 27 miles north of town in the area known as the Cedars and the Pioche Hills (be careful, there are a lot of private mining claims in the area). It helps to have a 4-wheel-drive vehicle because the roads are often muddy or snowy in late fall, otherwise stick to paved roads.

Some harvesting tips: The BLM includes important information with the Christmas tree tags; read this carefully.

The trees always look smaller out in the woods, so bring a measuring tape as well as a saw. The stories are legion about people that have dragged trees home that fill the whole room if they can even get them in the door. Avoid forest areas with mature trees, because these trees are far too big and there are few young trees of suitable size. The young trees are mostly in more open areas.

BLM Tree Permits

An individual may purchase from one to five tags (trees) at \$4 each with one check or money order. They are for piñon and juniper trees only. Over the counter tag sales at Caliente Field Station continue through December 23, 775-726-8100.

You are allowed to top trees that are under ten feet tall, but cut away the remaining stump to as close to the ground as possible. The lower branches tend to curve upwards, so be careful when topping or trimming, that the shape of the tree doesn't change significantly. The trees are odiferous at first, so give them a few days outside to air out. Make sure you have a roomy and sturdy base that holds water, because piñon trunks tend to be thicker than the spruce and fir trees normally sold as Christmas trees.

A few interesting stats about these trees: The Single-Leaf Piñon Pine and the Bristlecone Pine share the title of Nevada State Tree. The piñon is the only pine bearing a single needle per fascicle; the oldest known tree of this species is 903 years old and the largest ever discovered is 4.4-feet in diameter, 46.3-feet tall, with a 48.1-foot canopy.



Dougherty's Fine Jewelry

John Lnerode

Making what's old new again



New Custom Jewelry
Handmade by John
Unique One of a Kind Items
Beautiful Silver Jewelry
With Genuine Stones
Prices Start at \$25.00



Layaways Welcome

689 Main Street
Pioche, NV 89043



775-962-5511
702-622-4999

Eagle Valley Resort LLC

Stay a Day - Stay a Year

RV Supplies, Store, Fast Food, Ice

Fire Wood, Bar, Gaming, Pool Table & Lounge

RV Spaces & Cabins to rent

1255 Resort Road
 HC 74, Box 262-2
 Pioche, NV 89043

www.eaglevalleynv.com

775-962-5293





Winter sledding a fun pastime — for the daredevils!

By Roscoe H. Wilkes

It was a moment never to be repeated. There they were, gathered about 100 yards below the tramway on the road above town - about eight of the town's boys, ages 10 through 15, each with his own sled and ready to go. It was mid-winter, 7:00 p.m. in 1931. The sky was clear; it was dark and cold. One at a time each taking maybe three running steps, then it was plunk the sled down on the road with the owner landing on top and each hand grabbing an end of the guiding cross-bar.

Down the hill they went gradually picking up speed as they approached the turn at the top of Main Street. It was then a steeper grade and a faster speed down through the town's business district. Over a little hump at the intersection and immediately past Thompson's Opera House they went, each hoping to out-speed his buddies. Shortly, they passed the schoolhouse at the lower end of town.

On they went, full speed ahead past what is now Highway 93 and onto the Eagle Valley Road for another several hundred yards.

When the brakes were applied, more accurately described as the dragging of feet, the trip was brought to a stop in the softer snow off the road. At this point there remained only one thing to do, that being the long, cold walk back to town unless Bill Lloyd appeared, which he quite often did.

It wasn't the Bill Lloyd you now know as your County Commissioner; he wasn't alive yet. It was rather Bill Lloyd, his uncle, a really nice young man who had heart and a genuine thoughtfulness for the younger boys of the town. Bill had a Model A Ford Coupe, a car with two small chrome rear bumpers, one behind each of the rear fenders.

When Bill appeared with his Ford appropriately chained up, a boy would promptly tie his sled to one of the bumpers. Another would tie his sled to the first one and so on. The result would be: up the road went the Ford with 8 sleds in tow, four in a row tied to each bumper.

This arrangement would permit several trips on a given night. Without Bill, it would usually be one and not more than two with the long walk and the cold temperature controlling.

How fast did these sleds go down through town? I can't tell you in miles per hour, but when conditions were right it was very fast. In those days the roads were not hard surfaced; rather, they were graveled but kept smooth. During the day when the cars were out and around they packed the snow down to a hard surface.

Sometimes it warmed up during the afternoon, and the hard-packed snow would partially melt. Then come night it would freeze up again. The result would be an icy road upon which those sleds would soar. Come dark, the cars were all off the streets and at home, except perhaps for Bill Lloyd.

Every boy and many girls had a sled of their own, or at least access to one. The sleds



came in all shapes, sizes and names. One brand was supreme, "Flexible Flyers." Every boy who didn't have one wished he did. They were the Cadillacs of the sled world. I think mostly because they were flexible and steered better than most.

The excellence of sleigh riding in Pioche had another side. There were accidents caused, no doubt, by the high speeds attained and where they were often used, i.e., on the public streets of Pioche.

Douglas Liston, then maybe seven or eight years of age, was sledding down the street past the Murray Fullerton and Delmue homes towards the intersecting Pioche Street.

Unfortunately Tom Montgomery's coal delivery truck and Douglas came to the intersection at the same time with a serious collision. Douglas was hurt. Ma Steward approached Mrs. Liston expressing her sorrow that little Dougie was hurt and her hope for his early recovery. Then in parting Ma was her usual self, saying what she was thinking and without regard to the effect. Her final question to Mrs. Liston was, "Do you think it will leave him goofy?" Only Ma Steward had such tact.

On a day which I believe to have been in 1928 or 1929, Ruby Olinghouse was sledding down Pioche Street with her younger sister, Annabelle, on the sled with her. My recollection could be in error, but I believe they struck a parked car. Annabelle was not hurt, at least not seriously. Ruby lost her life. (A sad day in Pioche.)

A bobsled was handed down year to year from the 1920's. It was used by the younger adult set, those in their 20's. Its size was such that it would permit maybe three riders, each sitting up facing forward. The one in front guided the sled as best he could with his feet dragging the road's surface. With the extra weight and its excellent design and construction that bobsled was fast, fast.

On one occasion a popular young man of Greek descent, Fred Karacas, was the front of the sled and doing the guiding. Something went wrong while at a high speed, and there was a wreck. Fred was hurt more than just a

casual bump.

Although he made a full recovery, I'm quite sure he never rode that bobsled again. The younger set, the town kids, characterized the event in their own inimitable but not too decent style: "Did you hear that Fred cracked his ass on the bobsled?" And so things went in Pioche.

I can't be positively sure, of course, but I firmly doubt that the kids of any town anywhere had better sleigh riding than that enjoyed by those in little old Pioche, Nevada. It was real fun. They were moments never to be repeated.

Lincoln County Telephone
System, Inc.

For all your communication needs
www.lctsys.com

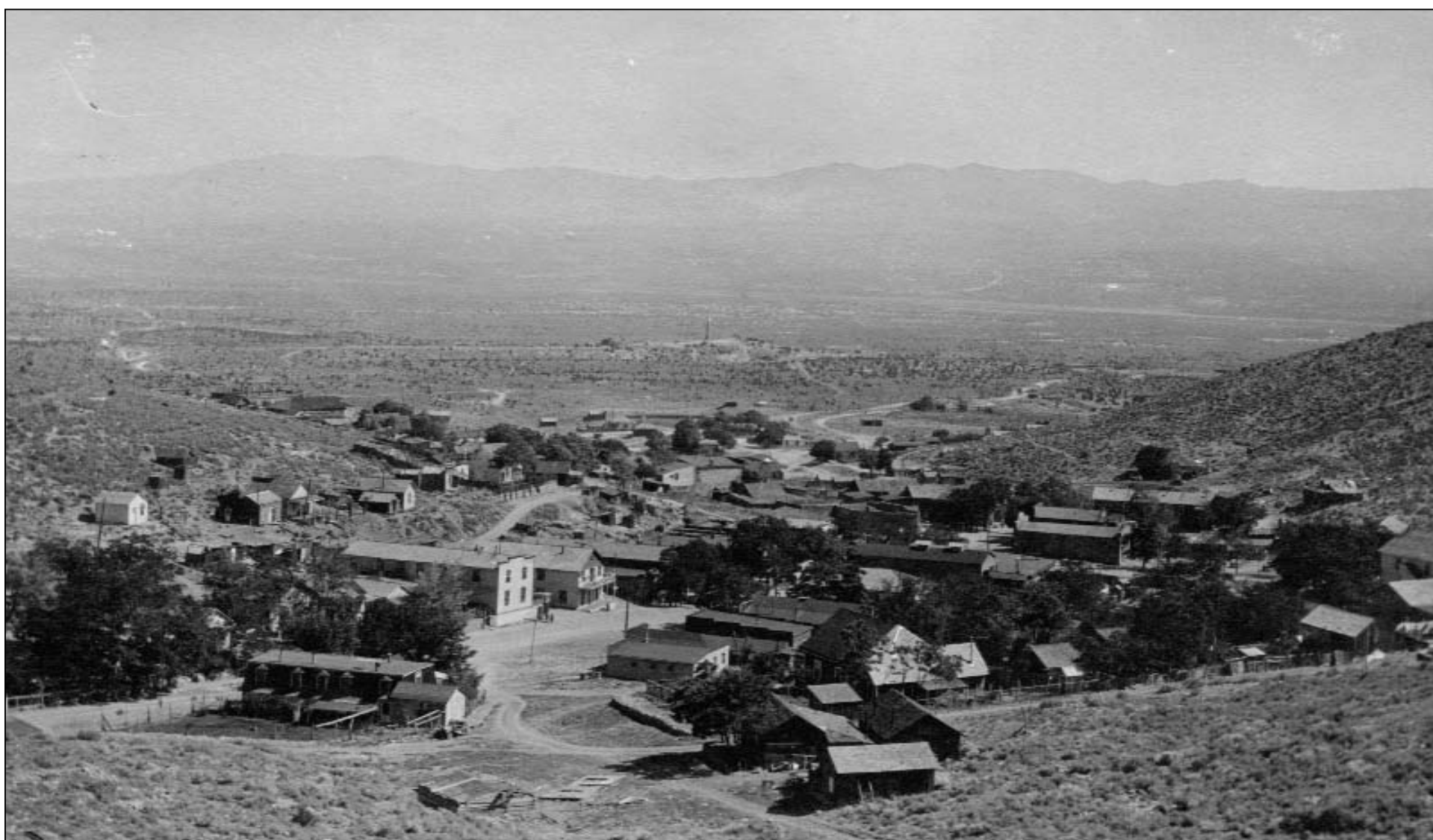
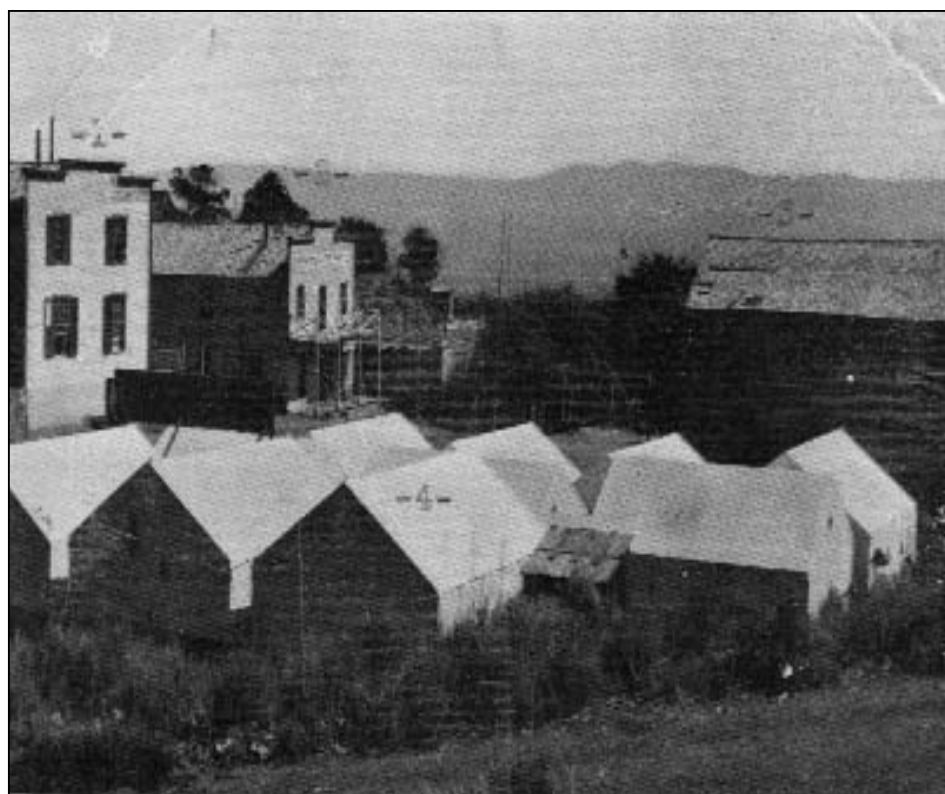


747 Main Street
P. O. Box 150
Pioche, NV 89043

775-962-5131
800-340-4131
Inside LC County Dial 611

PIOCHE ACCOMMODATIONS

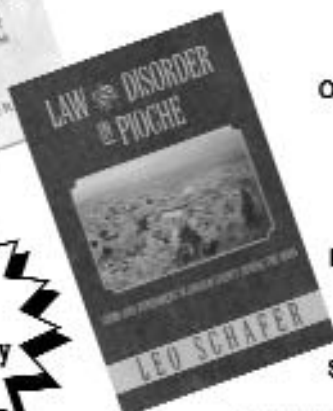
Visitors to Pioche have seen different types of lodging. Tent cities were erected in many mining towns as production required new workers quickly. See more photos of early accommodations on Page 14.



Local author writes about Pioche's past....

On Sale at the Following Locations:

- A & B Service Station
- Miner's Market
- Overland Hotel & Saloon
- Peggy's Gifts
- Pioche Museum
- Purple Onion Antiques
- The Rag Doll
- Silver Café & Gift Shop



Only \$13.00 per copy

Published by Book Connection LLC
Pioche, Nevada

Meadow Valley Pharmacy

Located next to Grover C. Dils Medical Center

Prescriptions, medical supplies, and immunizations

We bill all insurances.
State employees can now fill prescriptions for a 90-day supply.

New Digital Kodak Photo Processor

775-726-3771 Phone
775-726-3685 Fax

OPEN
Monday-Friday 9AM to 6 PM

P.O. Box 315
800 N. Spring Street
Callente, NV 89008

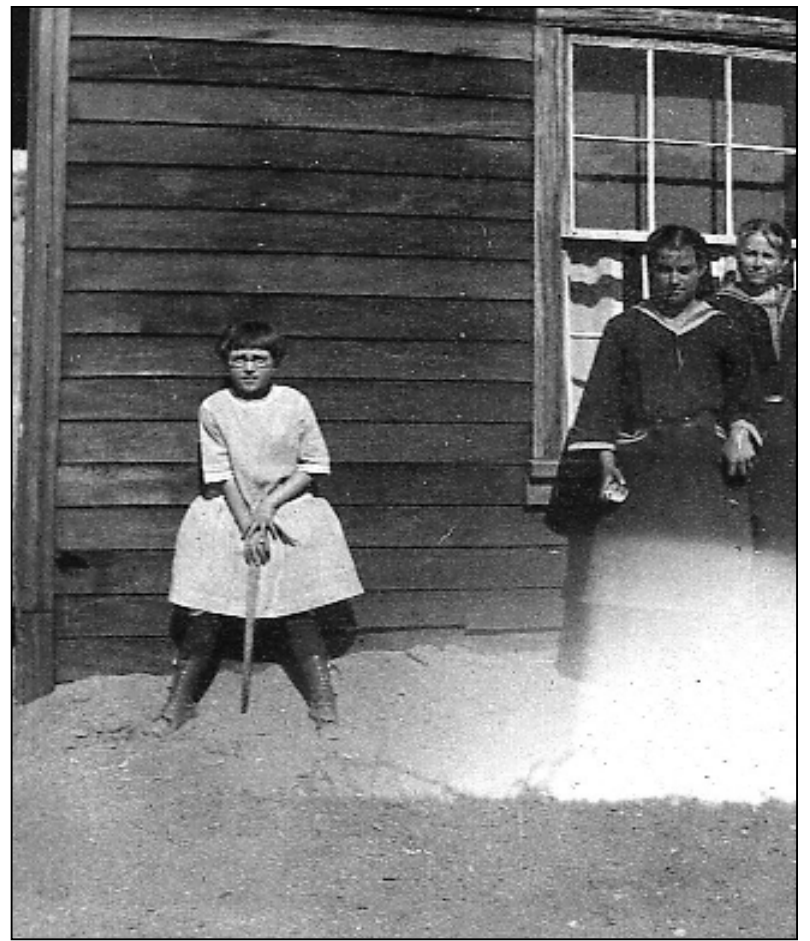
The Fogliani Family: Swiss-Italians in Nevada

By Barbara Rohde

Switzerland has almost nothing in common with Nevada, aside from snow-capped mountains and rocky soil. But in 1876, nineteen-year-old Luigi Fogliani from Biasca, Switzerland felt the desire to go to America. Luigi's father had spent 5 years in America, starting in 1865 as a logger and timber-man in New York, and his tales of adventures in America thrilled the young boy when his father returned. He saved up money from herding and selling the family's goats and cattle, and their dairy products, and bought passage on a ship, following the blessings of his parents. Three cousins, Vincenzo, Jeremiah and Samuel Fogliani, awaited him out west, where they quickly put their log-cutting skills to work making charcoal for the mines at Eureka, Nevada. He was also a skilled stone-mason, a good talent to have when building the beehive-shaped charcoal ovens that came to dot the Nevada landscape. Two other Biasca-born men, Giuseppe (Joseph) and Andrew (Jr.) Delmue, were also working in the charcoal-making industry near Eureka, and they possibly told him of the ranch established by Andrew Delmue Senior near the mining town of Pioche. The charcoal industry came to a sudden halt in 1879, with the "Fish Creek War," a dispute over the prices paid for charcoal between the producers and the users.

Vincenzo (also called "Swiss Bob") and his two brothers had bought a Ranch in Spring Valley in 1876, from William B. Maxwell. When the labor dispute occurred, they went back to the ranch to work it, while Luigi wandered the mining camps of Nevada, doing what work he could find. In 1892, he wound up at the Fogliani Ranch in Spring Valley and purchased ranch property from Jim Barlogi, another Swissman. In 1897, Luigi, now going by the Americanized Louie, purchased his cousin's ranch, in partnership with Andy Delmue. The three brothers Fogliani returned to Switzerland to stay, even though they had become naturalized American citizens. In 1899, Louie returned to Biasca for a visit, and wound up bringing home a pretty young wife, Teodora. She had been born the year before Louie left for the United States, but was impressed with the stories Louie told, and the fact that he owned his own ranch.

They came back to the ranch, and welcomed their first child, John (called Jack) in 1900. After four years, and two more children, Louie and Teodora sold their ranch to Andy Delmue, and leased the Delmue family's Spring Valley Ranch (a mile or so to the north of the partnership ranch). In 1907, this ranch was sold to the Rossetti brothers, and the Fogliani family of five now moved south to the old Rice Ranch. Teodora's youngest sister Faustina had come to visit them in



1907, and wound up staying. Faustina met Andy Delmue, and in 1910 they married – and Andy sold the Maxwell Ranch back to Louie and Teodora, who needed the extra rooms in the Maxwell Ranch home for their fifth child; three more would follow her in the years to come.

The Fogliani family raised beef and dairy cows, which they sold for meat and dairy products to the miners in Pioche and the newly-established mines at Stateline, Fay, and Deer Lodge. They raised grass hay, cutting it "by hand" in the early years, then by power equipment in later years; their hay



Real Estate



REALTY ONE GROUP
A Team of Professionals

Janet L. Leedham, CRS
Certified Residential Specialist

Cel: (702) 219-1990 1333 N. Buffalo Dr.
Dir: (702) 645-2897 Suite 190
Fax: (702) 655-9200 Las Vegas, NV 89128
JLeedham@RealtyOneLV.com RealtyOneLV.com

Lincoln County Specialist

was kept to feed the livestock during the winter months. They also had a pond which would freeze over in the harsh winters of Spring Valley, and they cut ice blocks in the winter and stored the ice in specially-insulated "ice houses" through the summers to sell or to use in preserving the dairy and meat products. One of the most special products that Louie and Teodora made was salami and sausage, from hogs raised on the ranch. No one could make salami like Louie Fogliani! All of these products were taken "to town" by wagon and teams until 1922 when Louie bought his first car.

Jack had left home by this time and had gone away to college and trade schools (automotive and electrical). He returned home in 1923, and worked on the ranch for a few years, then worked as an auto mechanic at the Arrowhead Garage in Pioche. He became Justice of the Peace when Judge W.J. Campbell left office early; then was elected to two more terms of office. After that, he became Lincoln County Sheriff for a couple of terms (starting in 1943). He eventually served as Warden of the Nevada State Prison in Carson City. History was one of his special interests, and he compiled histories of all the families that had lived in Spring Valley with the collaboration of Marguerite Rice Lyman.

The other son, George, born in 1907, stayed close to home and helped on the ranch, learning auto mechanics, welding and machinist skills. He became part-owner of the Arrowhead Garage in Pioche when it was sold to Roy Orr, and worked in many of the Lincoln County mines as a machinist. His son, Mike, had owned the Chevron gas and service station now known as Tillie's before Ed & Linda Wright bought it in the late 1980's.



Of the six daughters, Louise married Lawrence Wadsworth from Panaca, they moved to St. George and owned a movie theater and soda fountain. Olympia (nicknamed "Doc" because she enjoyed patching up her siblings and ranch animals) married a Fischer from White Pine County, and Mr. Fischer became a Nevada State Senator. Dora married a schoolteacher and moved away. Daughter Mary taught school at Deer Lodge and Rose Valley and then married a local boy (Louis Scott) and stayed in the County. During the World War II years, when Louis served in the military, Mary worked in the County Assessor's office in Pioche. Daughter Josephine married a boy from a neighboring ranch, Chester Oxborrow, and they developed a ranch in Dry Valley (where Echo Canyon Dam is located). Chet was a County Commissioner for a few terms; after retiring from ranching, they moved to Mesquite. The last member of the family to arrive, in 1923, was daughter Esther; she was a plump baby, whose big belly reminded Louie of old Pete Delmue's wide girth, and so she was nicknamed Pete, a name that has stuck through her long life (including when she served as Deputy Clerk, then was elected County Clerk for 24 years). "Pete's" son Louie Cole worked for



the Power District, and had two sons – one of whom (Dusty) lives in Pioche and his wife Penny works for the Lincoln County Record (newspaper). "Pete's" daughter Vicki married Lanny Adair, who was a Lincoln County Sheriff's deputy for many years. He and Vicki still live in Panaca.

The old Maxwell/Fogliani Ranch was sold to Chester Oxborrow five years after Louie's death in 1938, and Teodora moved into Pioche where a new home was built for her. Chester and a partner sold the ranch to Samuel J. and Leo Hollinger, who in turn sold it to Kermit and Miriam Hollinger. After Kermit's death, Miriam sold it to Frankie Delmue, grandson of Guiseppa (Joseph) – one of the brothers born in Biasca, Switzerland who were such good friends to Luigi Fogliani. The old ranch house is long gone, but the memories of the Fogliani and Delmue families live on in the families' memories. (Thanks to "Pete" for loaning me Jack's written histories!)

BANK CLUB of PIOCHE



Meet your friends uptown Pioche

Cocktails, Music, Video Poker,
& Penny Slots

Bar Snacks & Bar Food

Free Pool



723 Main Street
Pioche, NV 89043

775-962-5861

MORE ACCOMMODATIONS

From its early mining days throughout the town's history, different types of lodging have been available in Pioche. The photos here are some of what miners, new residents, and visitors found when they came to Pioche

Today, the historic Overland Hotel is the largest accommodation and visitors also have the option of small cabins at Tillie's or motel rooms at the Motherlode. Cabins are also available at Eagle Valley Resort. A complete list is located on the back page.



LEAST-DESIRABLE LODGING IN PIOCHE



Louis Benezet conducting a tour of the jail cells at the Million Dollar Courthouse in Pioche.



Jail cell at the Million Dollar Courthouse in Pioche.

PIOCHE BIBLIOGRAPHY

A Yankee trader in the gold rush; the letters of Franklin A. Buck. Compiled by Katherine A. White ([http://lweb2.loc.gov/cgi-bin/query/r?ammem/calbk:@field\(DOCID+@lit\(calbk067div138\)\)](http://lweb2.loc.gov/cgi-bin/query/r?ammem/calbk:@field(DOCID+@lit(calbk067div138)))).

Boot Hill, The Pioche Cemetery and the Story of the Pioche Boom; by Leo Schafer; Book Connection, LLC, Pioche, Nevada; 2008; 196 pp.

The Complete Nevada Traveler; by David W. Toll; Gold Hill Publishing Co., Inc.; 256 pp., 2008.

I Dig Pioche, Historic Pioche Nevada; Compiled by Corinne Fullerton Shumway and Peggy Draper Hone; Published by the Pioche Historical Society, 2005, 462 pp.

Pioche Chamber of Commerce web site, www.piochenevada.org.

Greater Lincoln County Chamber of Commerce web site, www.lincolncountynevada.com.

Nevada Ghost Towns & Mining Camps by Stanley W. Paher; Howell-North Books, Berkeley, California, 1970, pp. 290 to 308.

The Sagebrush Ocean, A Natural History of the Great Basin by Stephen Trimble; University of Nevada Press, Reno and Las Vegas, Nevada, 1989, 248 pp.

Nevada Historical Marker Guidebook, Third Edition; Edited by Dave Basso; Nevada Publications, P.O. Box 15444, Las Vegas, Nevada 89114, 1986, 128 pp.

The Backyard Traveler Returns, 62 Outings in Southern, Eastern and Historical Nevada; by Richard Moreno; Published by Carson City Children's Museum, 1992, 262 pp.

Nevada's Weather and Climate; by John G. Houghton, Clarence M. Sakamoto and Richard O. Gifford, Special Publication 2, 1975, Nevada Bureau of Mines and Geology, Mackay School of Mines, University of Nevada Reno, 78 pp.

Shrubs of the Great Basin, A Natural History; by Hugh N. Mozingo, drawings by Christine Stetter; University of Nevada Press, Reno and Las Vegas, 1987, 342 pp.

Nevada, A History of Changes; by David Thompson, A Publication of the Grace Dangberg Foundation, 232 pp.

Forty Years in the Wilderness, Impressions of Nevada 1940-1980; by James W. Hulse, Nevada Studies in History and Political Science No. 22, University of Nevada Press, Reno, 1986, 141 pp.

An Interview with Gue Gim Wah; An Oral History conducted and edited by Robert D. McCracken, Lincoln County Town History Project, Lincoln County, Nevada, 77 pp. <http://www.lndocuments.com/Ethnography/wah.pdf>

Driving and Walking Tours of Lincoln County Nevada.com, published by the Greater Lincoln County Chamber of Commerce with a grant from the Nevada Commission on Tourism, 34 pp.

Geology of the Great Basin by Bill Fiero, University of Nevada Press, Reno, 1986, 197 pp.

Nevada Map Atlas; Nevada Department of Transportation, 1263 South Stewart Street, Carson City, NV 89712, 775-888-7000, pio@ndot.state.nv.us, www.nevadadot.com.

Nevada Department of Wildlife, <http://www.ndow.org/>.

Bureau of Land Management, http://www.blm.gov/nv/st/en/fo/ely_field_office.html.

Nevada Division of State Parks, <http://www.parks.nv.gov/>.

Nevada Commission on Tourism, <http://travelnevada.com/>.

Treasure in the Hills; Families of Pioche, Nevada & Nearby mines, ranches & valleys; Compiled by Corinne Fullerton Shumway; Published by the Pioche Historical Society, 2007, 539 pp.

Treasure in the Hills, Families of Pioche, Nevada & Nearby mines, ranches & valleys, Volume II; Compiled by Corinne Fullerton Shumway; Published by the Pioche Historical Society, 2009, 362 pp.

Geology and Mineral Deposits of Lincoln County, Nevada, Nevada Bureau of Mines and Geology Bulletin 73; by C.M. Tschanz and E.H. Pampeyan, Mackay School of Mines, University of Nevada, Reno, 1970, 188 pp.

Law and Disorder in Pioche; by Leo Schafer, Book Connection, LLC, Pioche, 2009, 216 pp.

RAINBOW CABLE

735 Main Street

Pioche, NV 89043

Cable TV for all Lincoln County

775-962-5111

COMMUNITY RESOURCES

Restaurants

Historic Silver Café(775) 962-5124

Lodging

Hutchings Motel(775) 962-2853

Motherlode Motel(775) 962-5159

Overland Hotel(775) 962-5895

Sweet Life Guest Cottage(775) 962-5188

Wright's Country Cabins (866) 810-7303

RV Parks

Eagle Valley RV Park (775) 962-5293

Pioche RV Park(775) 962-3992

Roll Inn RV Park(775) 962-5566

Transportation (getting here)

Major Highways

From Las Vegas I-15 northbound to U.S. 93 north

From Ely U.S. 93 southbound

From Salt Lake City to Cedar City I-15 southbound

To UT SR-56 to NV SR-319 to U.S. 93

Lincoln County Airport(775) 728-4409

Lighted, paved runway, 4800 feet long

12 miles south in Panaca

Bus Service

Lincoln County Transportation...(775) 728-4477

Education

Pre-school/(775) 962-5832

Elementary School K-6

Junior High School(775) 728-4655

Students bus to Panaca, 12 miles south

High School(775) 728-4481

Students bus to Panaca, 12 miles south

Utilities

Pioche Public Utility(775) 962-5840

Solid Waste – NWS Crestline ... (775) 728-4333

County Government

Lincoln County Clerk(775) 962-5109

Taxes

Lincoln County Assessor(775) 962-5890

Police

Lincoln County Sheriff(775) 962-5151

Telephone

Lincoln County Telephone Co . .(775) 962-5131

www.lctsys.com

WUE Inc. (cell phone service) . (775) 962-5161

Cable TV

Rainbow Cable(775) 962-5111

Internet

Lincoln County Telephone(775) 962-5131

Medical

Grover C. Dils Medical Center .(775) 726-3171

25 miles south in Caliente

Caliente Clinic(775) 726-3121

Steven Klomp, Dentist(775) 728-4432

12 miles south in Panaca

Lincoln County Ambulance911

Shannon Kirchesh, Masseuse . . .(775) 728-4325

Panaca

Lincoln County Physical Therapy(775) 726-3117

Caliente

Meadow Valley Pharmacy(775) 726-3771

Caliente

Churches

Berean Baptist(775) 962-5886

Bible Talk Comm. Church, Panaca (775) 728-4734

Christ Church Episcopal(775) 962-5835

Holy Child Catholic, Caliente . .(775) 726-3669

LDS, Pioche Ward(775) 962-5469

United Methodist Church, Caliente.(775) 726-3665

Newspaper

Lincoln County Record(775) 726-3333

Caliente admin@lincolncountyrecord.com

Other Community Services

Pioche Senior Center(775) 962-5378

(serves lunch daily)

Pioche Chamber of Commerce .(775) 962-5544

www.piochenevada.org

Lincoln County Chamber of Commerce

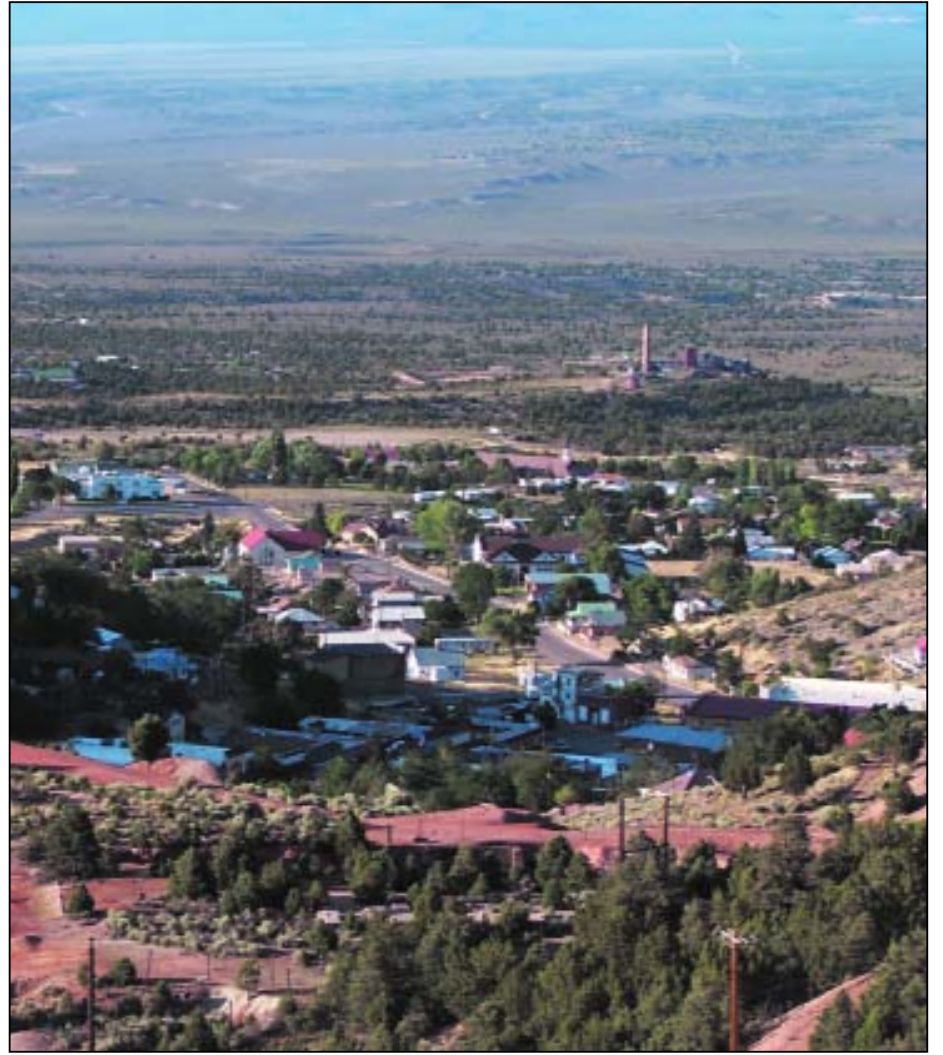
www.lincolncountynevada.com (877) 870-3003

Lincoln Links Golf(775) 962-5206

Retired Senior & Volunteer Program (RSVP)

Volunteers always welcome. . . .(775) 726-3447

VFW, Caliente(775) 726-3156



Looking down on Pioche from the slopes of Treasure Hill.

PIOCHE PROFILE

Much in contrast to its colorful past, today Pioche attracts new residents with its friendly, picturesque hometown appeal. Pioche is the Lincoln County seat; the courthouse is a prominent fixture of the town. With full amenities, Pioche offers good food, lodging, shopping, automotive and emergency services. The town's recreation center includes park and picnic facilities, a swimming pool and a baseball diamond. A 9-hole golf course, with artificial turf T-boxes and greens, is located 2 miles north of town at mile-marker 2 on SR322.

Pioche has two parks. The Mining "pocket" park is located at the upper end of Main Street, where the Business route from Highway 93 comes into town. It has a bandstand with a bench, overlooking a mine tunnel replica. The main town park is at the lower end of Main Street, by the new Courthouse. It has a baseball field, large grassy play area, a large picnic shelter with cooking areas, and playground equipment. This is where the Labor Day celebration events are held, including the mining/drilling competitions. The town swimming pool is located on the other side of the baseball field, and is open only during summer months.

The town's free R-V Park is located across the street from the swimming pool; six pull-through sites are available for short-term stays (less than one week). Water and sewer are available, no electricity, and a donation is requested for use. No restroom facilities are provided at this RV park. There are two commercial full-service RV parks for those wanting or requiring all the amenities.

With a population of about 800, Pioche is the northern-most community in Lincoln County. It is located 175 miles north of Las Vegas on U.S. 93 at 5,500 to 6,200 foot elevation in the high desert of southeastern Nevada. The relatively high elevation and location out of the rain shadow of the Sierra gives the town an invigorating 4-season climate. Average climate data:

- July average high, 89 degrees F.
- January average low, 21 degrees F.
- Annual rainfall average, 13.5 inches
- Annual snowfall average, 44 inches.

Purple Onion

Antiques
Vintage Items
Collectibles

Open Memorial Day through Labor Day

683 Main Street
Pioche, NV 89043 775-962-5000

Overland Hotel & Saloon

662 Main Street Pioche, NV 89043

Themed Rooms, A/C & Free Wi-Fi

Slots - Video Poker - Dance Hall

"New Gift Shop"

Back Bar over 150 years old

www.overlandhotelnv.com
overlandhotel@lcturbonet.com (email) 775-962-5895